

## THREE STAR HOTELS OF WANGDUE PHODRANG

### 1) Wangdue Ecolodge

**Location:** Damina Village, Ngashigaykha, Rubesa, Wangdue Phodrang, Bhutan



Wangdue Ecolodge is a family managed ecotourism venture. Built on the ancestral land of the family, the valley faces the confluence of two rivers. The four cottages having two suites each are a short walk along the ridge. Each Eco-Suite is self contained for a couple or family, having the option for twin beds or a king sized bed. Along with its large dressing and bathroom suite.

### ROOMS:





**Bathroom:**



## 2)Gakiling Guest House

**Location:** Near black-necked crane Information Centre, Phobjikha, Nubding, Wangdue Phodrang, Bhutan





Beautiful family run resort with all you need to enjoy beauty of the Phobjikha valley. Views from hotel are superb, rooms are spacious and comfy and food homely tasty. Property formerly run as “Gakiling Guest House” was thoroughly renovated in 2023, and its old reviews doesn't make justice to it, now it certainly belongs to best accommodation options in the Phobjikha valley.

## ROOMS:



### 3)Dewachen Hotel and Spa

**Location:** Phobjikha Valley, Gangtey, Bhutan



Dewachen Hotel is encircled by pine forests in the hidden valley of Phobjikha, home of the very rare Black Necked cranes. The hotel boasts fantastic valley views and a hot stone bath to ensure a relaxing and tranquil stay. The 28 double rooms have beautiful wooden interiors heated by an iron stove and hot water bags in the bed. The restaurant has the best views of the valley, paired with professionally prepared Bhutanese cuisine. From the hotel, cultural and horse-riding activities can be arranged.

#### ROOMS:





## Bathroom



## 4)Odiyana Hotel

**Location:** Gangtey, Wangdue, Bhutan



Odiyana Hotel in Gangtey Gonpa features a garden and a bar. Among the facilities of this property are a restaurant, room service and luggage storage space, along with free WiFi. Guest rooms in the hotel are equipped with a kettle. Every room is fitted with a private bathroom with a bath, a hair dryer and free toiletries. All units will provide guests with a dishwasher. Guests at Odiyana Hotel can enjoy a continental breakfast. The area is popular for cycling, and car hire is available at the accommodation. This property also has one of the best-rated locations in Gangtey Gonpa.

## ROOMS:



**Deluxe Double**



**Deluxe Twin**

## Bathroom:





## 5)Phobjikha Resort

**Location:** Phobjikha, Wangdue, Bhutan

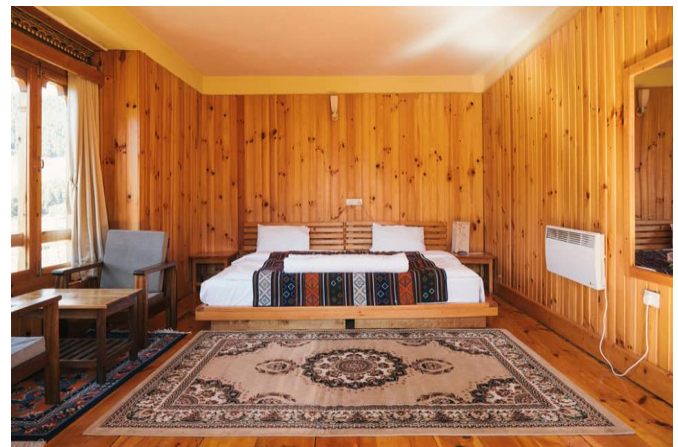


Phobjikha Resort is located a few meters above the ages old Khewang Lhakhang in the plains of the Phobjikha Valley, the main roosting ground of the Black Necked Cranes. Strategically located, the resort provides easy access to the valley's attractions, including the Gangtey Goempa monastery, the Black-Necked Crane Information Centre, and the scenic Gangtey Nature Trail.

### ROOMS:



**Double**



**Twin**



Suite

Bathroom:



## 6)ABC Lodge

**Location:** Nubding, Wangdue, Bhutan





Tucked away in the serene nature of Gangtey valley, ABC Eco Lodge provides comfortable and spacious rooms with wooden flooring and furniture.

Situated within the tranquil embrace of Gangtey valley, ABC Eco Lodge emerges as an idyllic haven for those in search of exceptional accommodation. This remarkable property boasts a collection of comfortable and spacious rooms, adorned with exquisite wooden flooring and furniture.

Perched below the monastery of Phobjikha Valley, ABC Eco Lodge offers guests an extraordinary opportunity to immerse themselves in the breathtaking beauty of the surrounding landscape. The lodge serves as a gateway to explore and appreciate the enchanting valley, providing a truly captivating and immersive experience.

With a selection of eight thoughtfully designed standard rooms, ABC Eco Lodge ensures that every guest receives the utmost care and hospitality. The attentive and friendly staff goes above and beyond to create an atmosphere of warmth and genuine Bhutanese hospitality.

## ROOMS:



## Bathroom

