

FIVE STAR HOTELS OF PARO

1) Como Uma

Location: Paro Valley, 10 min drive from Paro International Airport, Bhutan



The 5 Star COMO Uma Paro hotel in Bhutan is a traveler's paradise. Nestled amidst the snow-capped peaks and towering pines of the legendary Himalayas, this beautiful hotel by COMO is the embodiment of relaxation, peace and quiet. Around the hotel, guests at the COMO Uma can experience the unique culture of the Paro District, one of the most historic valley regions in all of Bhutan.

ROOMS:



Forest Room



Valley Room



Como Suite



Como Villa

Bathroom



Swimming pool



2)Zhiwaling Heritage Hotel

Location: Satsam Chorten, Paro, Bhutan



Set on 4 lush hectares of countryside with views of the surrounding mountains, this tranquil hotel in multiple stone buildings with ornate woodwork is 4 km from the Paro Taktsang sacred cliffside temple complex and 15 km from Paro Airport. Casual suites have sitting areas, balconies and mountain views, as well as cable TV and Wi-Fi access. Upgraded 1- and 2-bedroom suites add living rooms; there's one with a private shrine and butler service. In-room dining is available.

ROOMS:



Royal Raven Suite



Takin or Blue Poppy Suite



Junior Suite

Bathroom



Swimming pool





3) Le Meridien Paro, Riverfront

Location: Shaba, Paro, Bhutan



Set against the Himalayas, this polished, palatial hotel built to resemble a 17th-century fortress overlooks the Paro River and is 4 km from the airport, and 7 km from Rinpung Dzong, a famed Buddhist monastery/fortress.

ROOMS



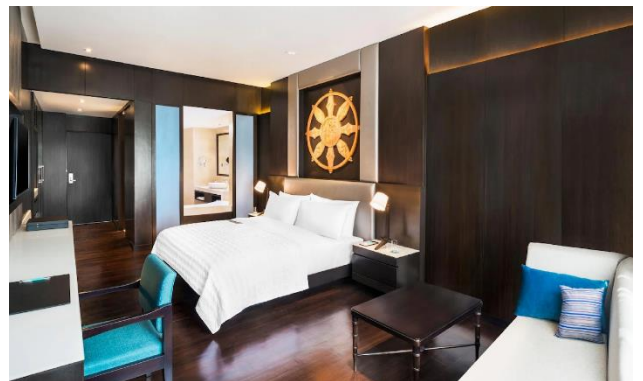
Deluxe Twin



Deluxe King



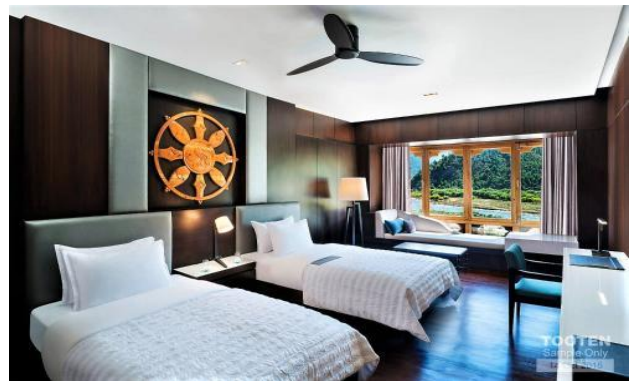
Royal Suite



Classic King



Grand Deluxe



Classic Twin



Corner Suite



Classic Room



Guest Room



Deluxe Twin

Bathroom



Swimming pool



4) Amankora

Location: Balakha Tshento, Drugyel, Paro, Bhutan



Combining Aman, the Sanskrit word for peace and Kora or Circular pilgrimage in dzongkha, Amankora is a unique circuit of lodges set across western and central valleys of Bhutan. Situated in Balakha village, 30 minutes from Paro international airport, 24 suite Amankora Paro retreat contrast rustic elements with contemporary design. Its architecture features natural rammed-earth walls, gently sloping roofs and wood paneled interiors. Hidden in the hills above Paro Town, this luxury lodge has the power to sweep guests from one world to another.

ROOMS:



Bathroom



5) Six Senses

Location: Above Paro National Museum



Sitting near a 12th-century fortress on a ridge above the Paro Dzong with breathtaking views, Six Senses Paro provides a warm, luxurious mountain retreat. The design has taken inspiration from the rock fortress, with its grand outdoor stone platform area where you can dine or relax. Perched up high at an elevation of 2,675 metres, the hotly anticipated Six Senses lodge sits in a prime position within Paro. As well as blending subtly into 12th-century ‘dzong’ ruins (from which it gets its name ‘Six Senses Stone Ruins’), this thoughtfully-designed property offers phenomenal sweeping views across the forested valley to dramatic mountains beyond, which sit perfectly at eye-level.

ROOMS:



Lodge Suite



Upper Lodge Suite



One Bedroom Villa



Two Bedroom Villa



Three Bedroom Villa

Bathroom



Swimming pool

